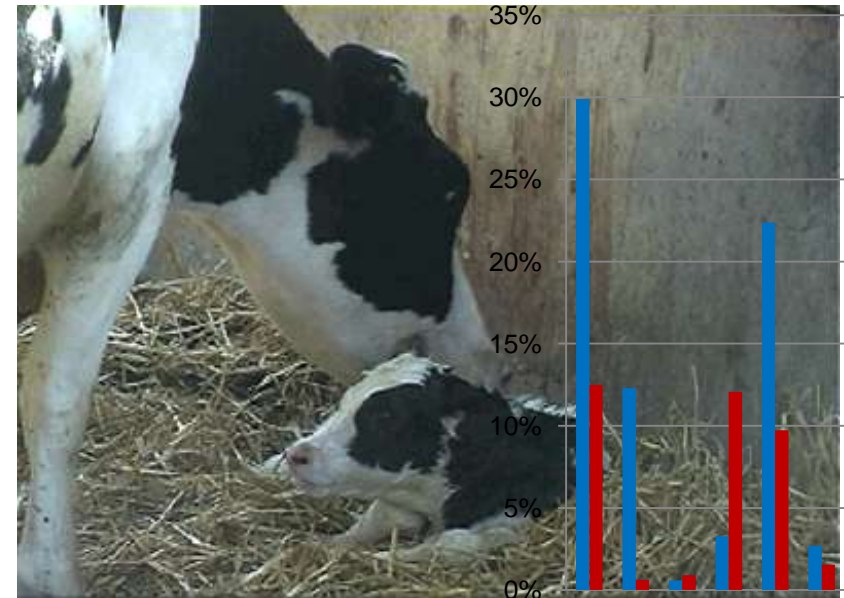




Linking animal welfare research with 'AssureWel'



🌿 Is the measure relevant to animal welfare?

Example: Feather cover

- Poor feather cover = risk factor for skin injuries and increases metabolic stress (Deschutter and Leeson, 1986; Tauson and Svensson, 1980)
- Feather loss over back/ rump is usually due to feather pecking (pulling) (Bilcik and Keeling 1999)
- Pain associated with pulling out feathers established 20 yrs ago (Gentle and Hunter 1990)



AssureWel measure



🌿 Can assessors be consistent?

Example: cattle lameness

↑ consistency:



- Detecting severe lameness (Winckler and Willen 2001)
- Fewer categories in the scale (Channon et al 2009)
- More experience in observing lameness (March et al. 2007)
- Live assessments included in training (WQ report 2006)

 **AssureWel training and standardisation**

🌿 How many animals should we look at?

- Study at U of Bristol (Mullan et al. 2009)
- Every pig on 6 farms assessed (7535 pigs)
- Computer modelling
 - Random sampling of pens of pigs
 - Calculation of accuracy of sample

➡ AssureWel sampling protocol

